









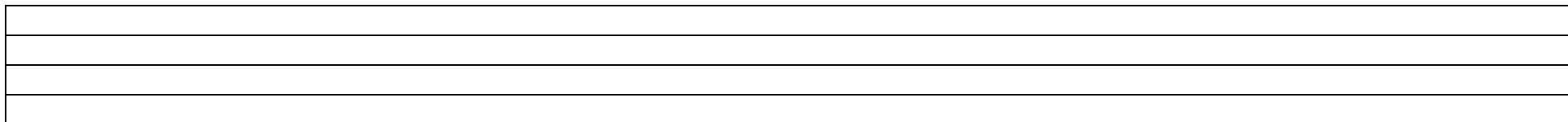


Music Theory

Name	Note	Rest	Beats ($\frac{4}{4}$)
Whole			4
Half			2
Quarter			1
Eighth			$\frac{1}{2}$
Sixteenth			$\frac{1}{4}$

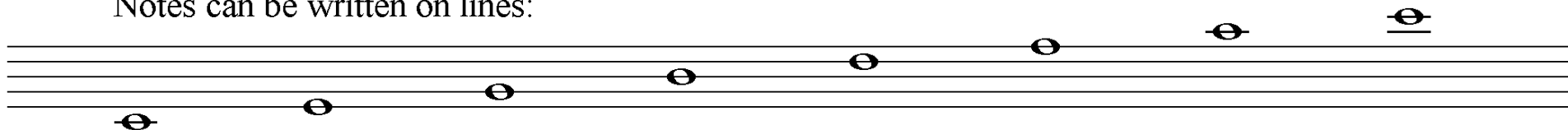


Staff

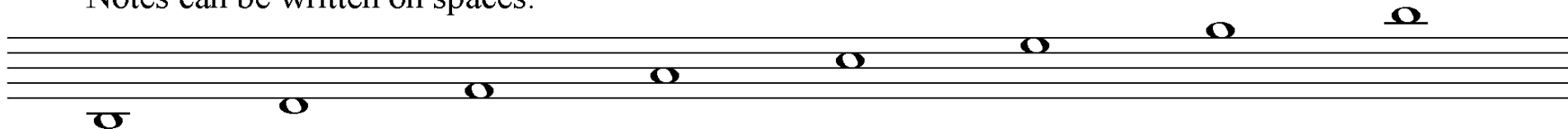
A Staff has 5 lines and 4 spaces

The first line and space are at the **bottom**

Notes can be written on lines:



Notes can be written on spaces:



The Musical Alphabet

A **B** **C** **D** **E** **F** **G**

Each line and space on the staff has a letter name.



This is a Treble Clef

Notes on the treble clef **lines** are from bottom to top:

E **G** **B** **D** **F**

An easy way to remember them is **E** **G** **B** **D** **F**

Notes on the treble clef **spaces** from bottom to top spell the word:

F **A** **C** **E**

Lines: □ E G B D F

Empty Garbage Before Dad Flips

F A C E

D C B A G F E

G A B C

Notes **can** be written above and below the staff using ledger lines.