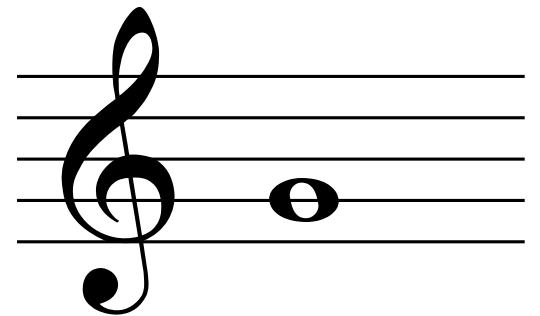
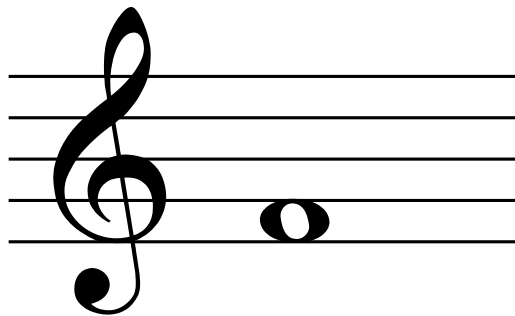
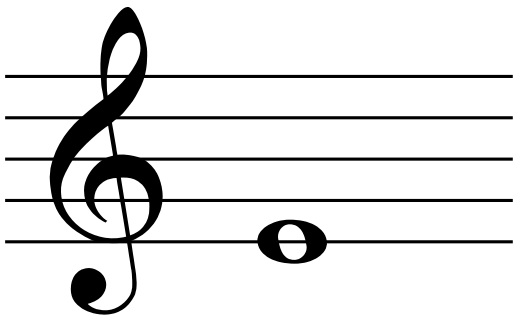
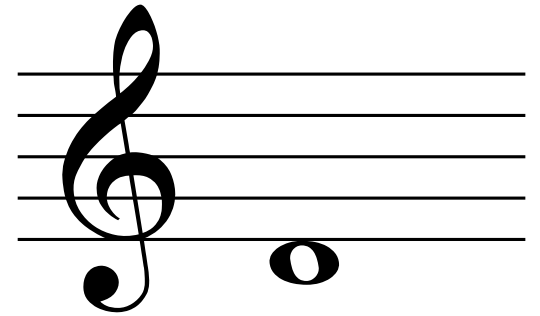
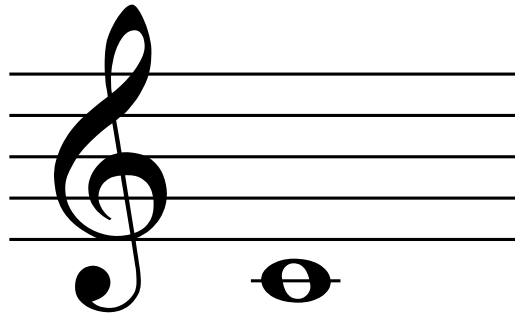


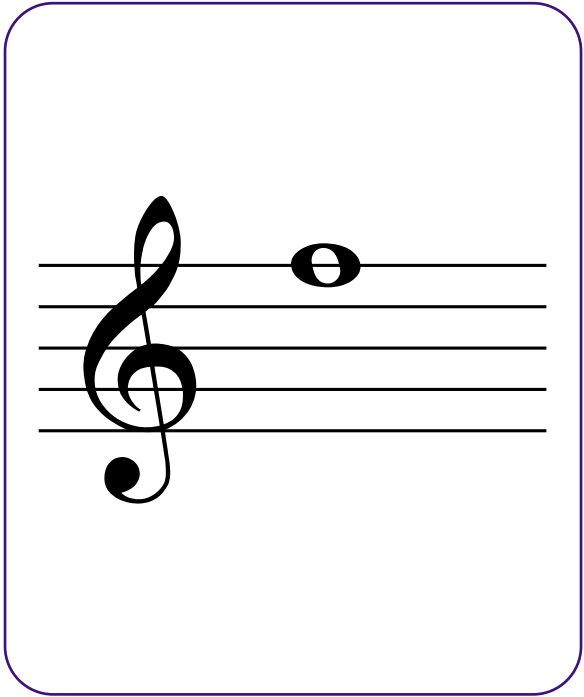
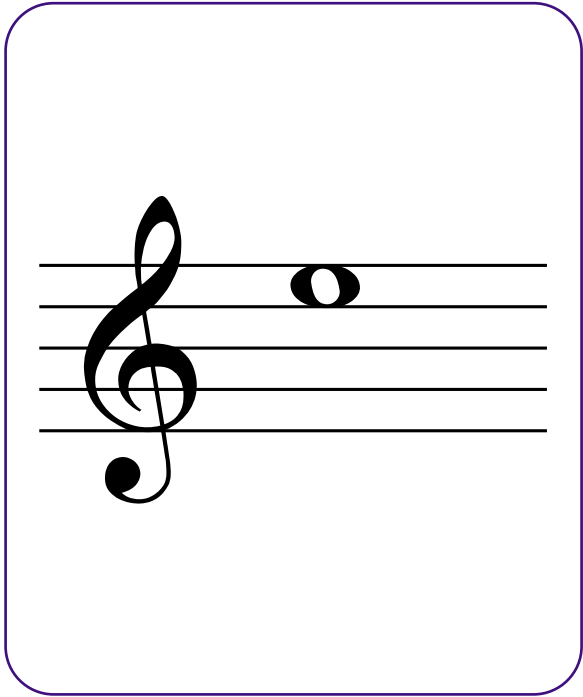
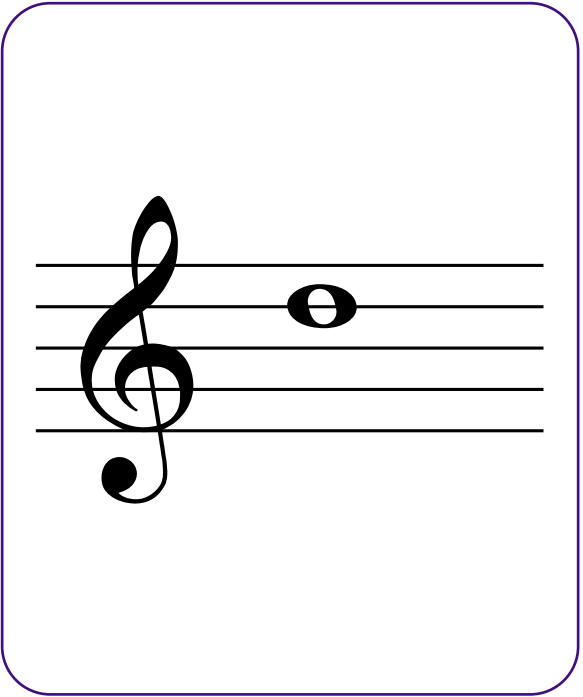
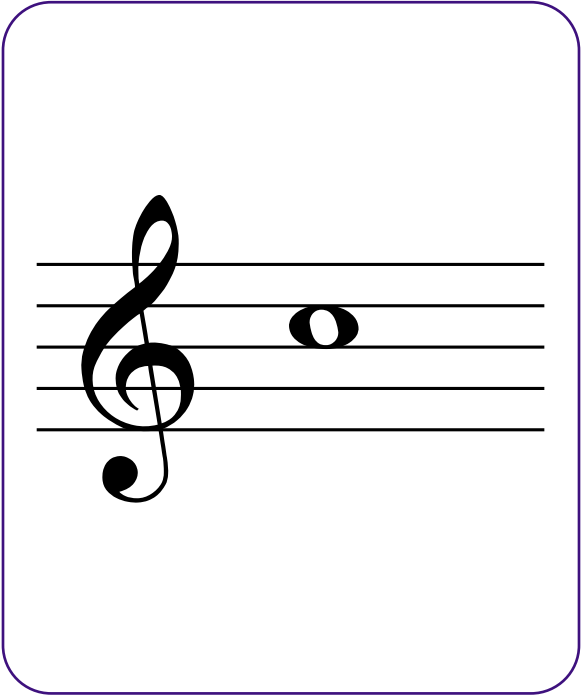
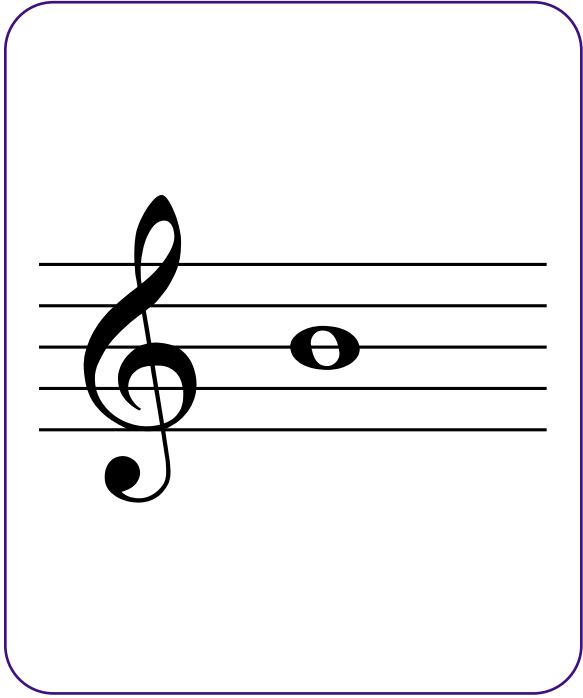
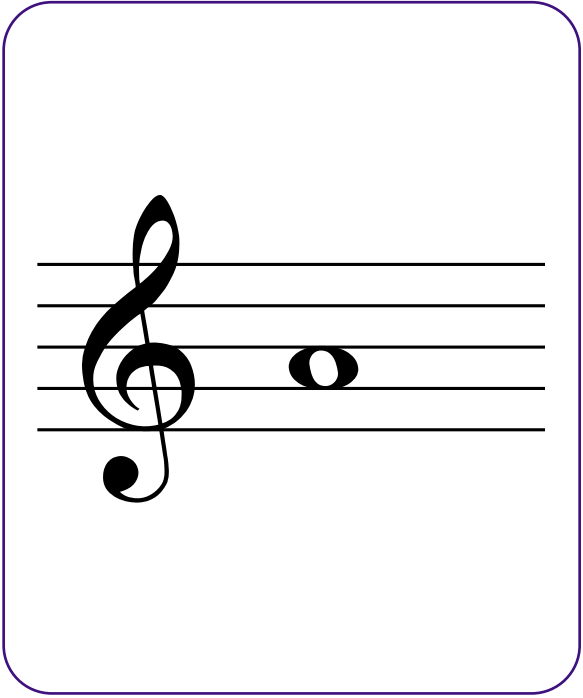


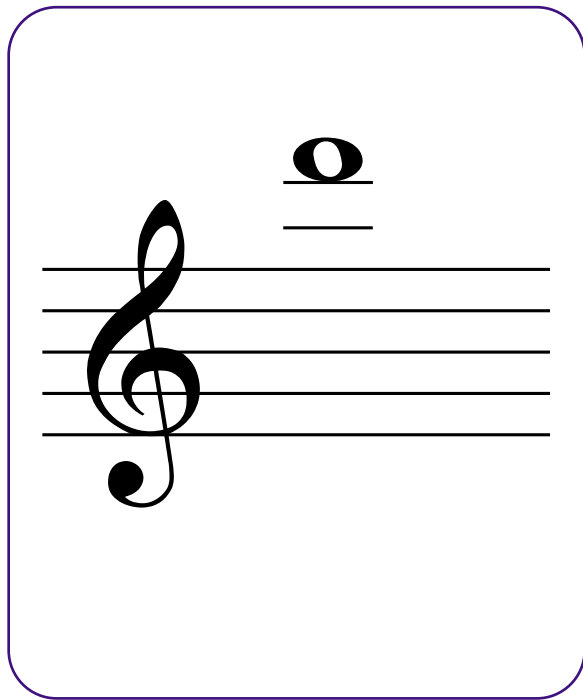
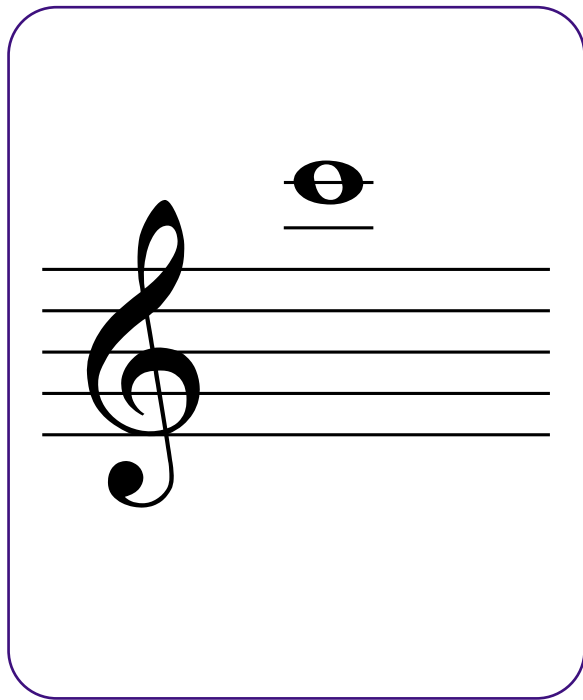
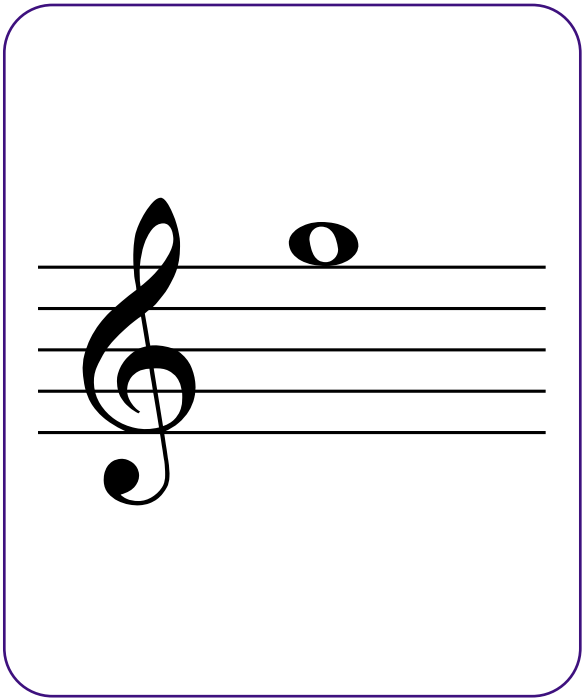
Treble Clef
Flash Cards



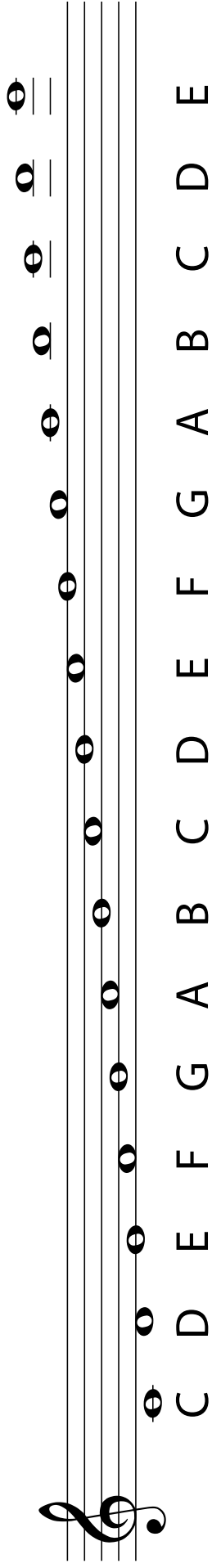
www.makingmusicfun.net







Answer Key



A musical staff with a treble clef. The notes are placed on the lines and spaces of the staff, corresponding to the letters C through E. Below the staff, the letters C, D, E, F, G, A, B, C, D, E, F, G, A, B, C, D, E are written in a vertical column, aligned with the notes above.

