

HW: 5-2 MathXL for School Additional Practice (on Google Classroom)

Warm up:

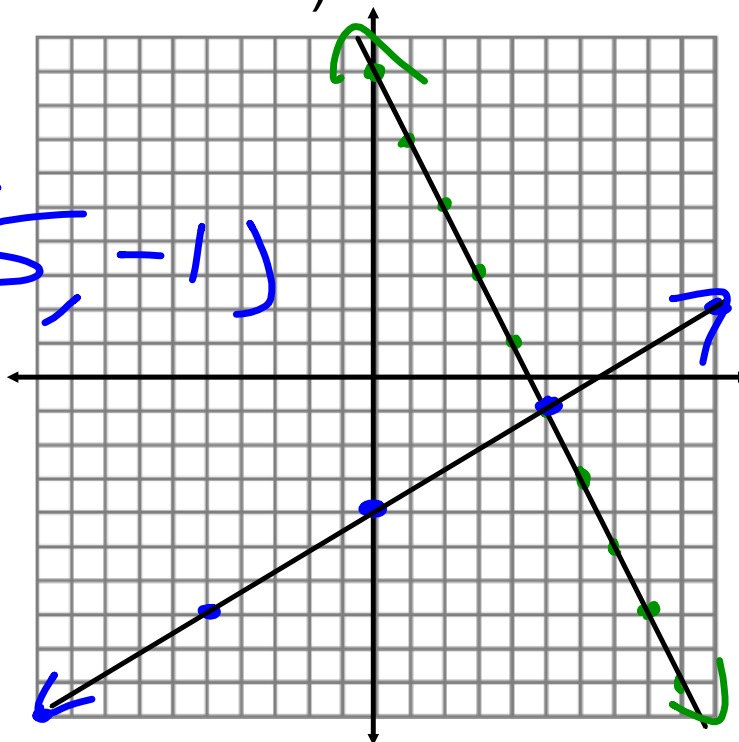
Solve by graphing.

$$y = -2x + 9$$

$$\frac{3x - 20}{5} = \frac{5y}{5}$$

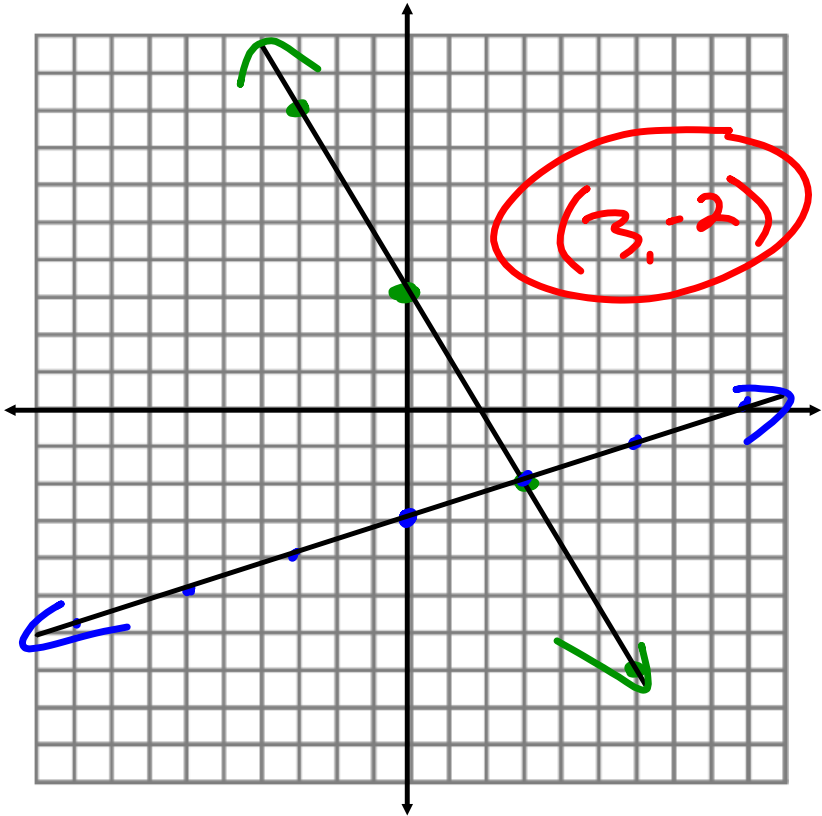
$$\frac{3}{5}x - 4 = y$$

(5, -1)



$$y = -\frac{5}{3}x + 3$$

$$y = \frac{1}{3}x - 3$$



Isolating y

$$\begin{array}{r} x + y = 5 \\ -x \quad -x \\ \hline y = 5 - x \\ y = -x + 5 \end{array}$$

$$\begin{array}{r} 2x = y - 8 \\ +8 \quad +8 \\ \hline 8 + 2x = y \end{array}$$

$$\begin{array}{r} 4x + 2y = 10 \\ -4x \quad -4x \\ \hline 2y = -4x + 10 \\ \frac{2y}{2} = \frac{-4x + 10}{2} \\ \hline y = -2x + 5 \end{array}$$

$$\begin{array}{r} 3x - y = 12 \\ -3x \qquad -3x \\ \hline -y = -3x + 12 \\ \hline -1 \qquad -1 \\ \hline y = 3x - 12 \end{array}$$

$$\begin{array}{r} -6x = 15 - 3y \\ -15 \quad -15 \\ \hline -6x - 15 = -3y \\ \hline -3 \quad \quad -3 \\ \hline 2x + 5 = y \end{array}$$

Solve the following systems of equations by graphing.

$$1) y = -\frac{1}{2}x - 1$$

$$y = \frac{1}{4}x - 4$$

$$2) 2x - 3y = -12$$

$$-4x + y = -6$$

$$3) y = \frac{2}{3}x + 6$$

$$y = x + 7$$

$$4) x - y = -7$$

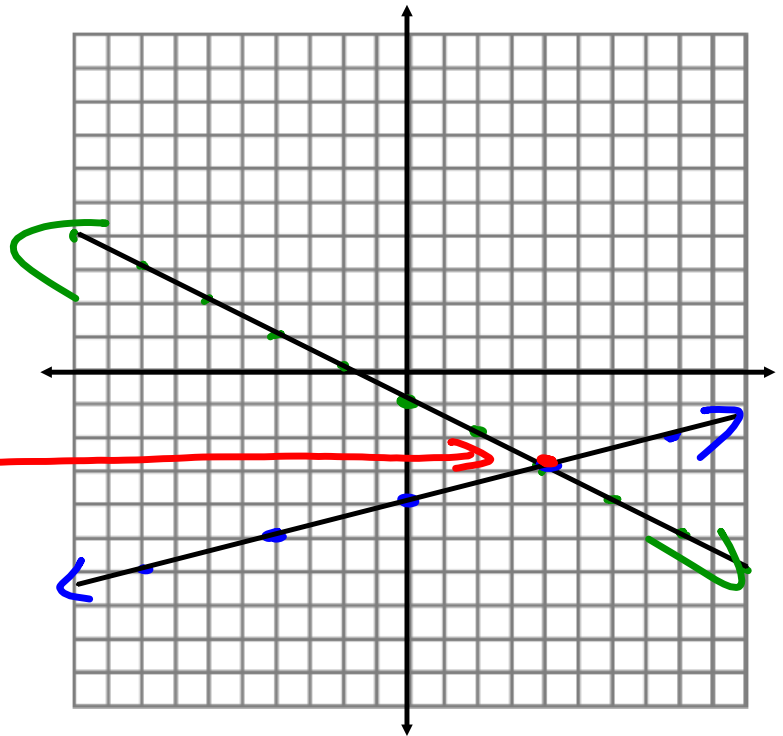
$$-3x + 2y = 16$$

www.desmos.com/calculator

$$1) y = -\frac{1}{2}x - 1$$

$$y = \frac{1}{4}x - 4$$

$(4, -3)$



$$2) \quad 2x - 3y = -12$$

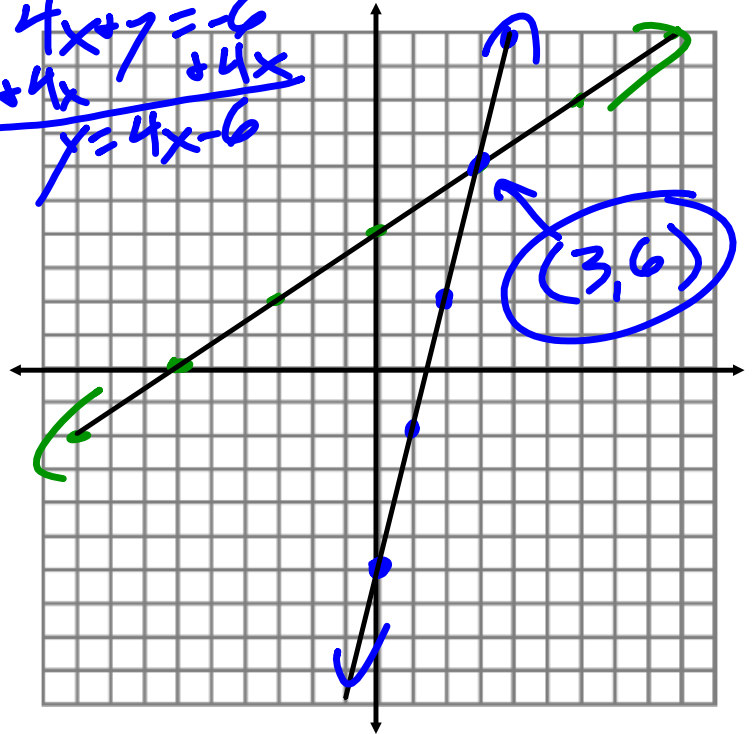
$$-4x + y = -6$$

$$\begin{array}{r} 2x - 3y = -12 \\ -2x = -2x \end{array}$$

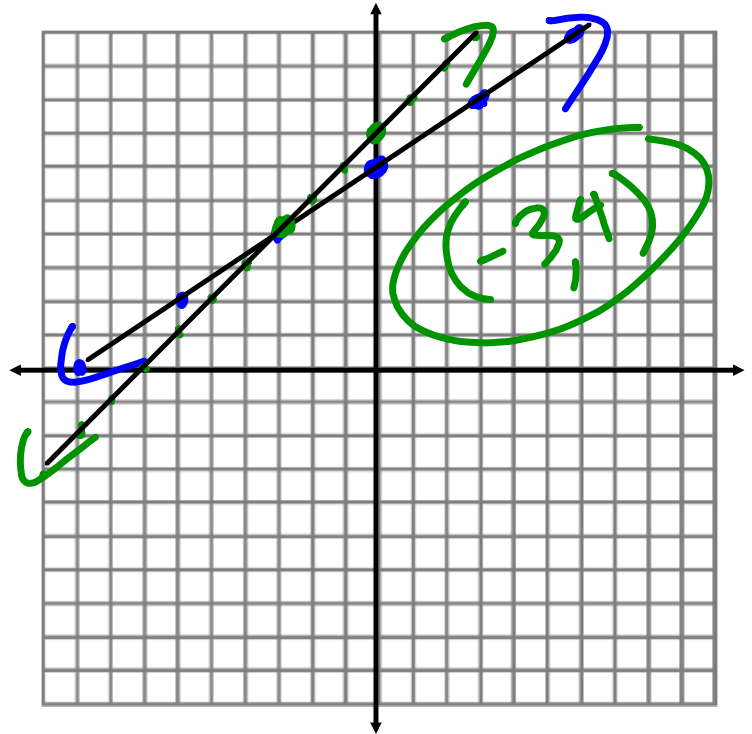
$$\begin{array}{r} -3y = -2x - 12 \\ = \end{array}$$

$$y = \frac{2}{3}x + 4$$

$$\begin{array}{r} -4x + y = -6 \\ +4x = +4x \end{array}$$
$$y = 4x - 6$$



3) $y = \frac{2}{3}x + 6$
 $y = x + 7$

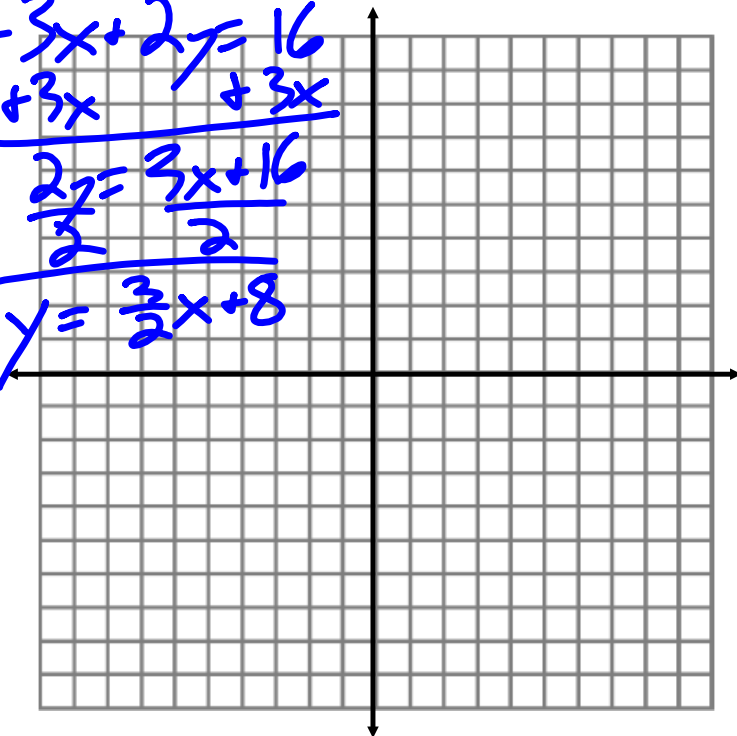


$$4) \quad x - y = -7$$

$$-3x + 2y = 16$$

$$\begin{array}{r} x - y = -7 \\ -x = -x \\ \hline -y = -x - 7 \\ \\ \\ \hline y = x + 7 \end{array}$$

$$\begin{array}{r} -3x + 2y = 16 \\ +3x = +3x \\ \hline 2y = 3x + 16 \\ \frac{2y}{2} = \frac{3x + 16}{2} \\ \hline y = \frac{3}{2}x + 8 \end{array}$$



January 4, 2022

