

**Warm up**

1) Last year, a certain stock price was \$48. This year, it is \$53. What was the percent change?

$$\frac{5}{48} = 0.104166\bar{6} \approx 10.42\%$$

2) In 1980, there were 168 students enrolled at West High School. Between 1980 and 1990, the high school experienced a 40% increase in enrollment. How many students were enrolled at the school in 1990?

40% ↑

140%

$$1.4(168) = 235.2$$

235 students

## **To find percent change...**

$$\% \text{ change} = \frac{\text{difference}}{\text{original}}$$

## **For problems where you know the percent change...**

- always starting with 100%
- always finding a percentage of the ORIGINAL number

Target is running a 35% off sale on everything in the store. How much would you pay for a comforter that is normally \$238?

$$0.65(238)$$

$$154.7$$

$$\$154.70$$

Barry decided to invest his money in Amazon.com stock. Since he bought it, it has gone down by 16.23%. If he has \$430 in Amazon.com stock now, how much money did he invest?  $83.77\%$

$$\begin{array}{r} 0.8377x = 430 \\ \hline 0.8377 \quad 0.8377 \\ \hline x = 513.3102543 \end{array}$$

$\$513.31$

When Lance bought his car, it cost \$19,000. Now it is worth \$13,350. What is the percent change in the value of the car?

$$\frac{19000 - 13350}{19000} = \frac{5650}{19000}$$

$$0.297368421$$

$$29.74\%$$

This year, Katie got a 4.5% raise. If her current salary is \$62,595, what was her salary last year?

104.5%

$$\frac{1.045x = 62595}{1.045 \quad 1.045}$$

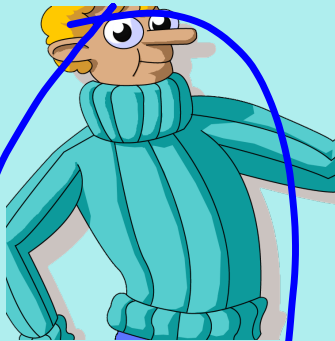
$$x = 59899.52153$$

\$59,899.52

# Collina's Clothing

Pi Day Sale!  
25% off

x 0.75



Sweaters  
reg. \$52.99

\$39.74

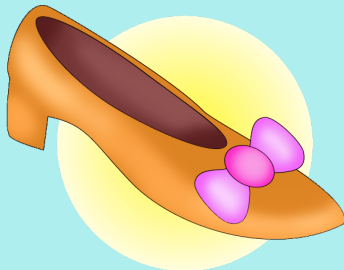
\$64.49

Coats  
reg. \$85.99



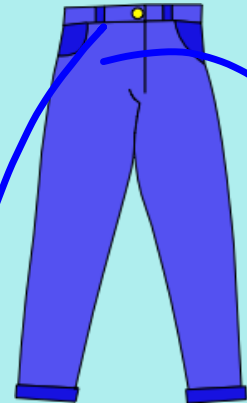
Shoes  
reg. \$139.99

\$104.99



\$29.24

Hats  
reg. \$38.99



Pants  
reg. \$35.99

\$26.99

# McGarry's Market

St. Patrick's Day  
Sale!

15% off

*x 0.85*



Sweaters  
reg. \$47.99

*\$40.79*

*\$159.49*

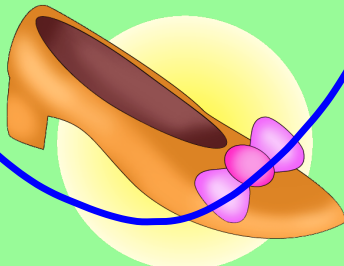
Coats  
reg. \$69.99



Pants  
reg. \$31.99

*\$27.19*

Shoes  
reg. \$89.99



*\$76.49*

Hats  
reg. \$29.99

*\$25.49*

