

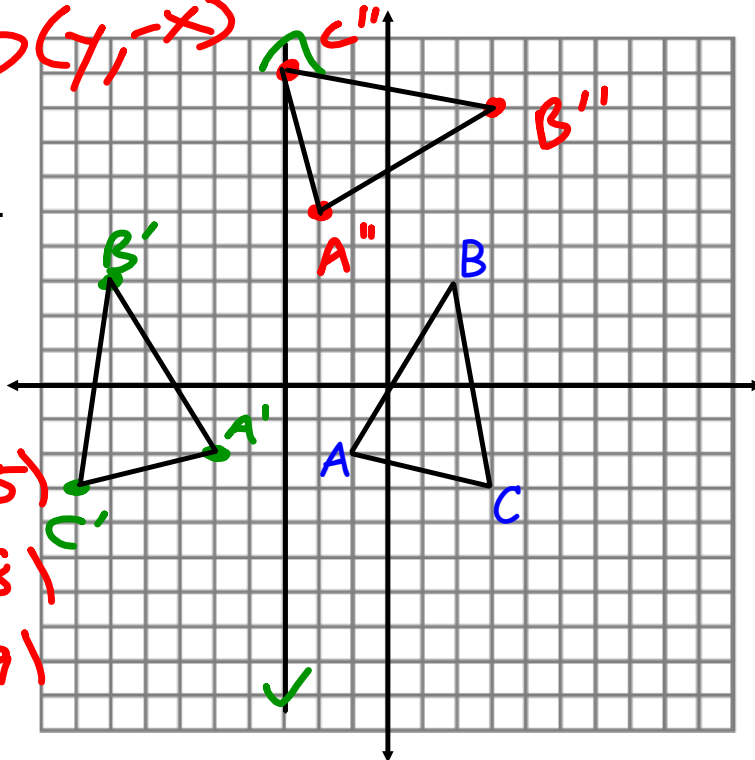
HW: Worksheet 270°

$(x, y) \rightarrow (y, -x)$

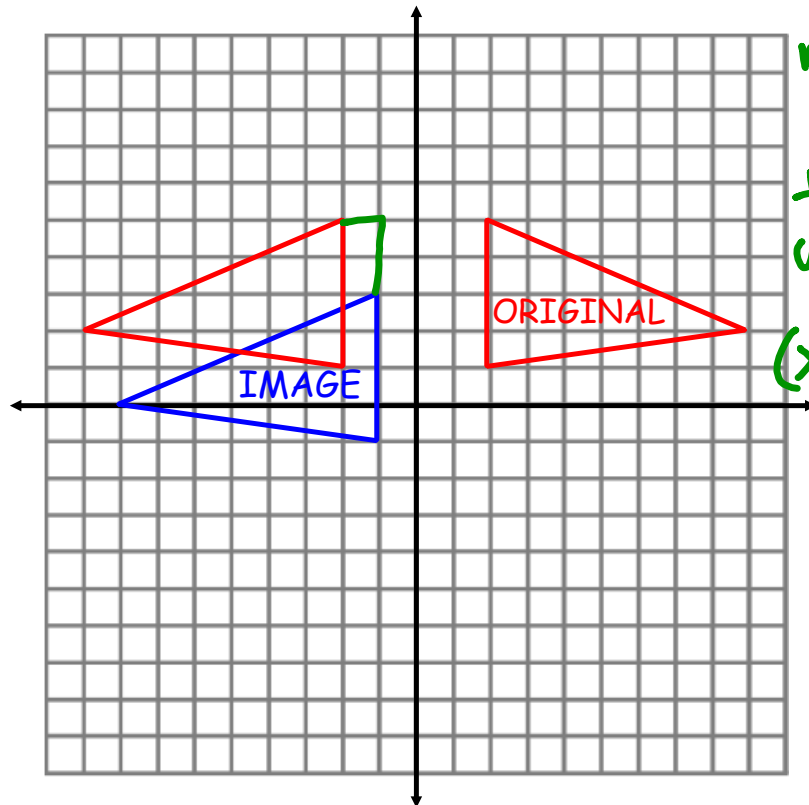
Warm up:

Graph triangle ABC with A(-1,-2), B(2,3), and C(3,-3). Reflect the figure over the line $x = -3$, then rotate 270° about the origin. List the coordinates of A'B'C' and A''B''C''.

- A'(-5, -2) A''(2, 5)
- B'(-8, 3) B''(3, 8)
- C'(-9, -3) C''(-3, 9)



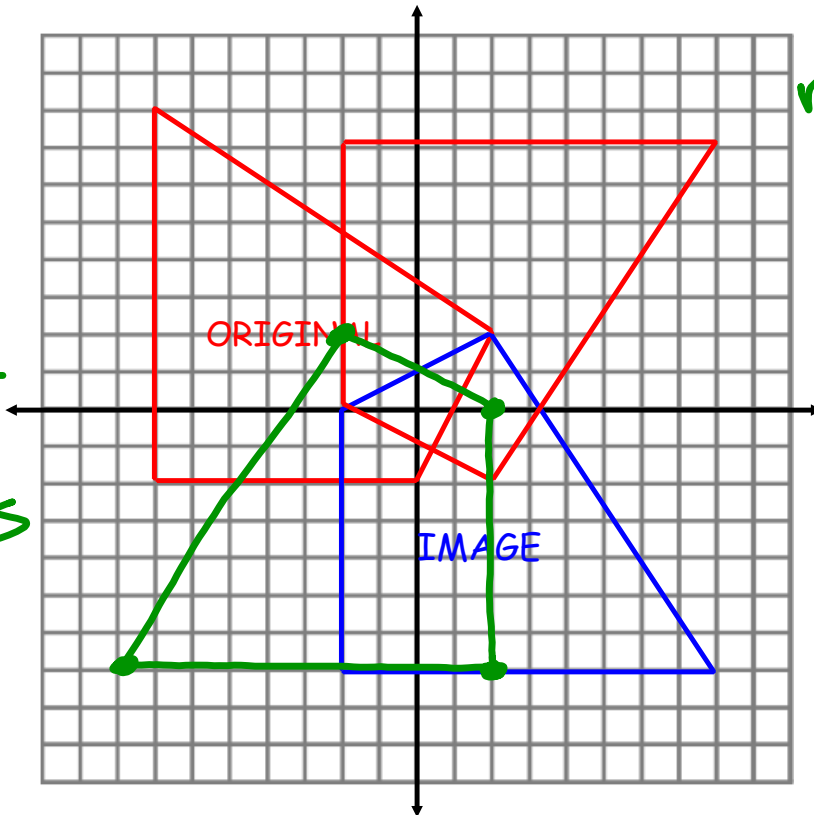
What series of transformations has occurred?



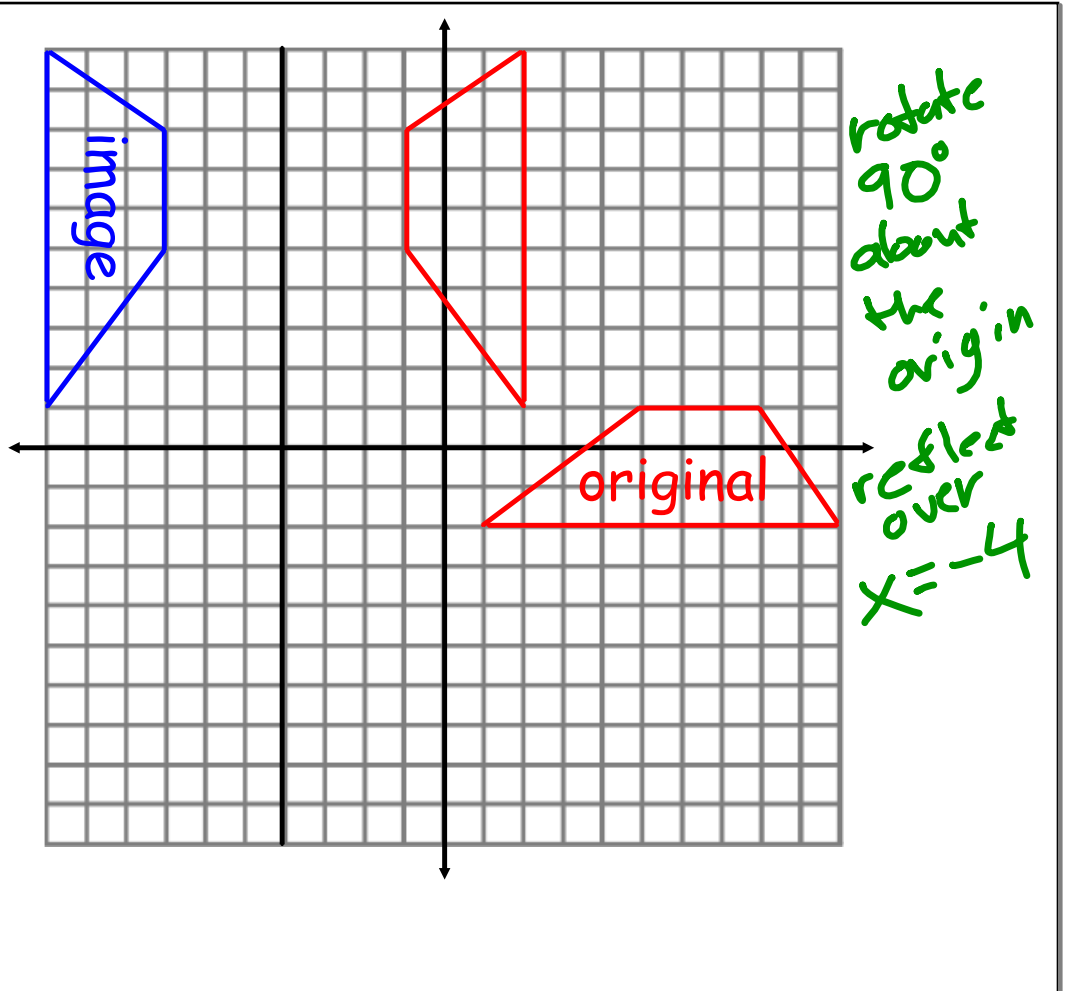
reflect over
the y-axis
translate
using the
rule
 $(x,y) \rightarrow (x+1, y-2)$

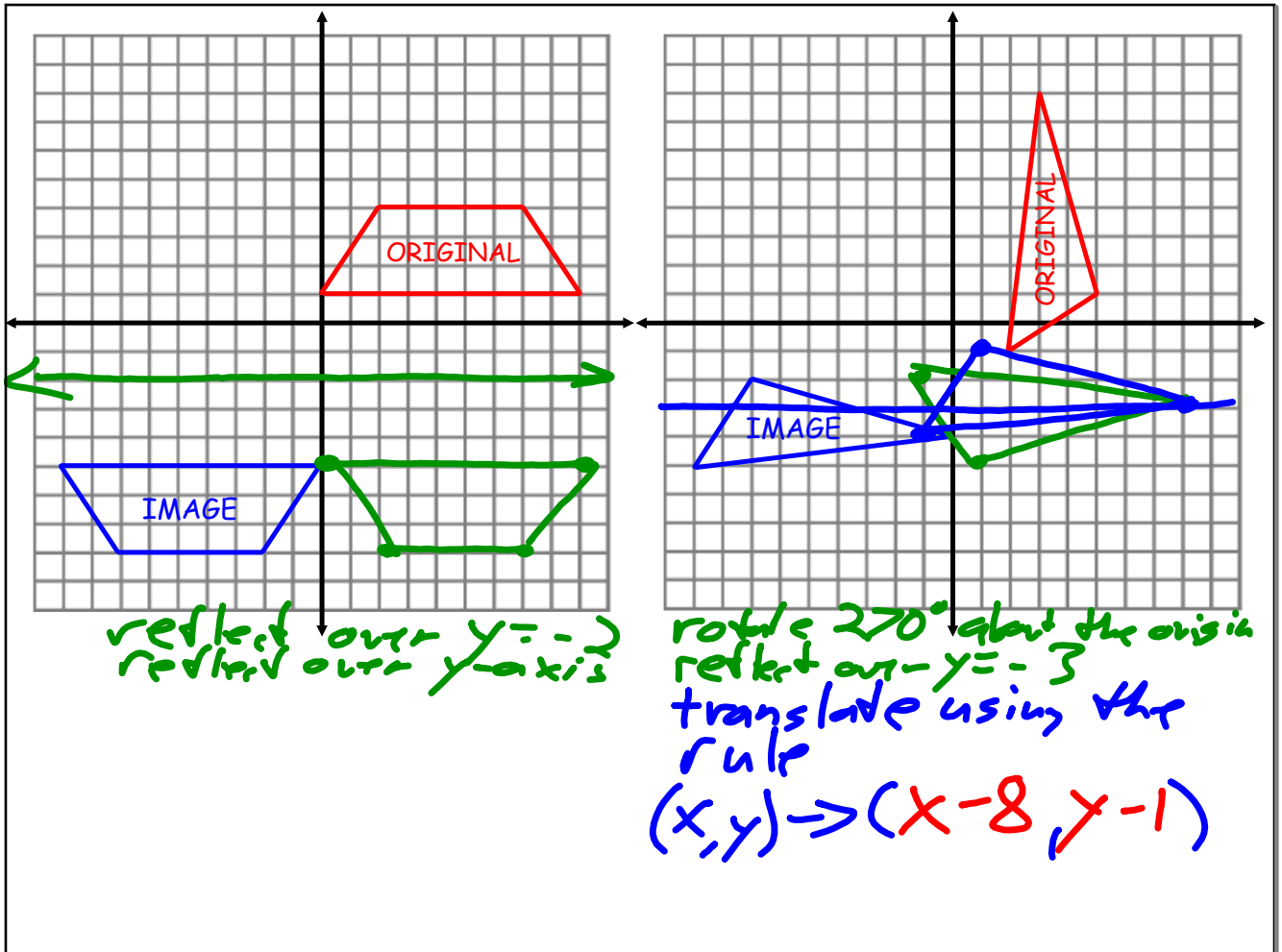
What series of transformations has occurred?

rotate
90°
about
the
origin
reflect
over
y-axis



rotate
about
the
orig in
reflect
over
the
x-axis





March 1, 2022

