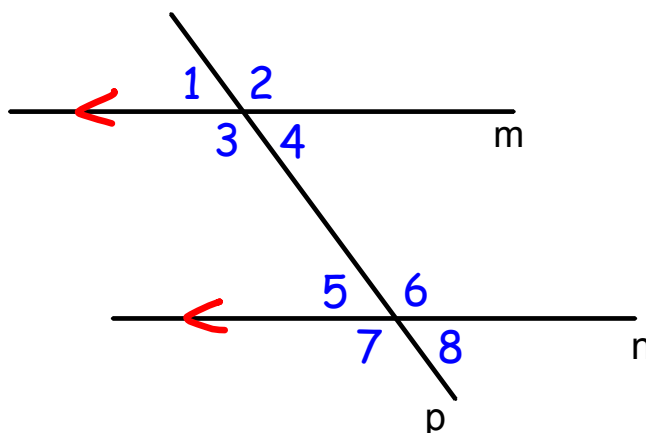
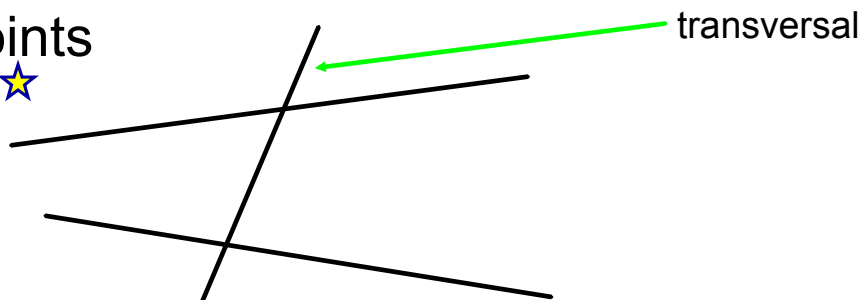


HW: Worksheet/5-9, 18-26, 28-35, 40



**transversal** - a line that intersects two other lines at different points



**corresponding angles** - angles that lie on the same side of the transversal and in corresponding positions

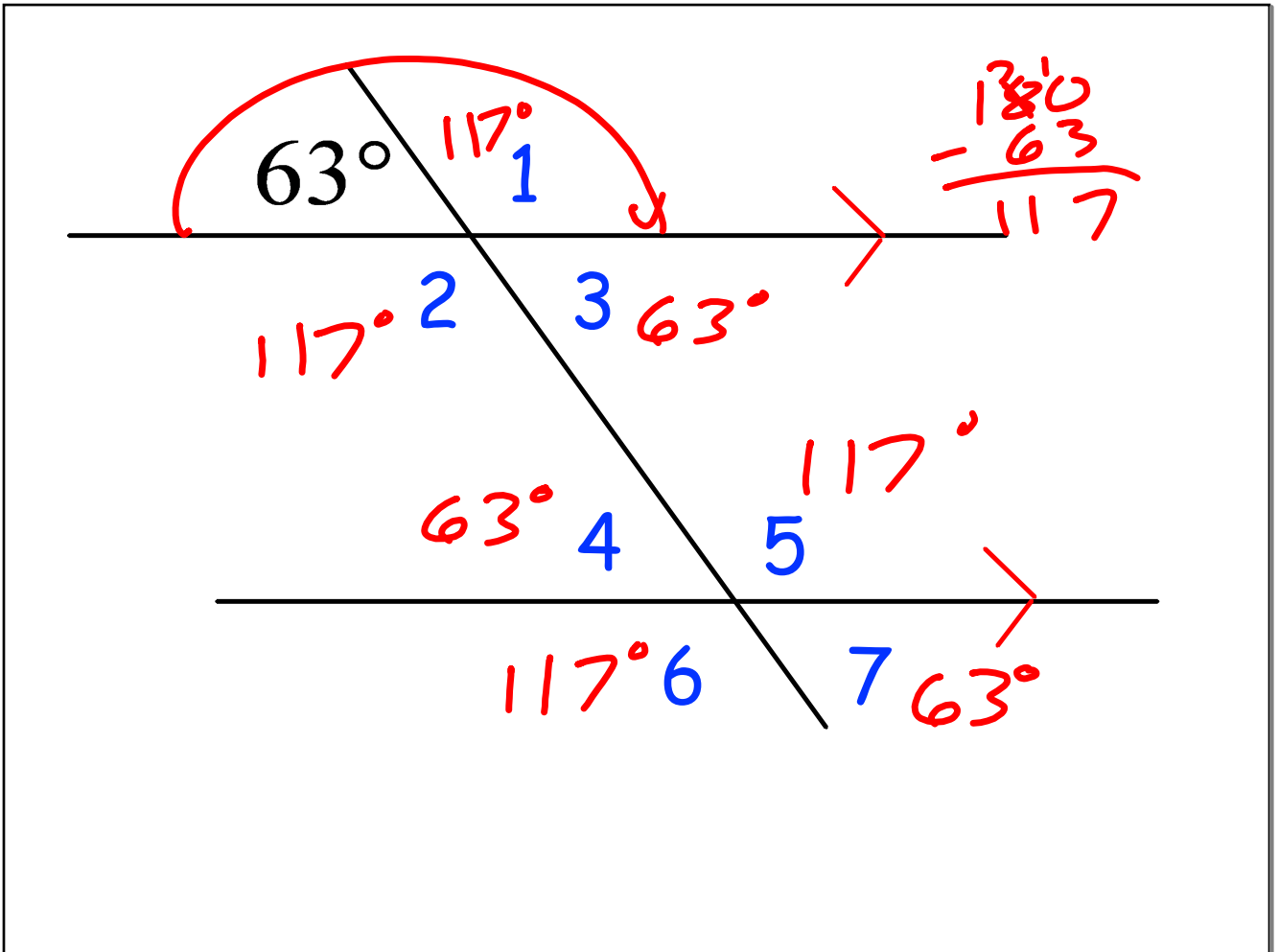
ex: 1 and 5, 3 and 7, 2 and 6, 4 and 8

**alternate interior angles** - angles that lie within a pair of lines and on opposite sides of the transversal

ex: 3 and 6, 4 and 5

**alternate exterior angles** - angles that lie outside a pair of lines and on opposite sides of the transversal

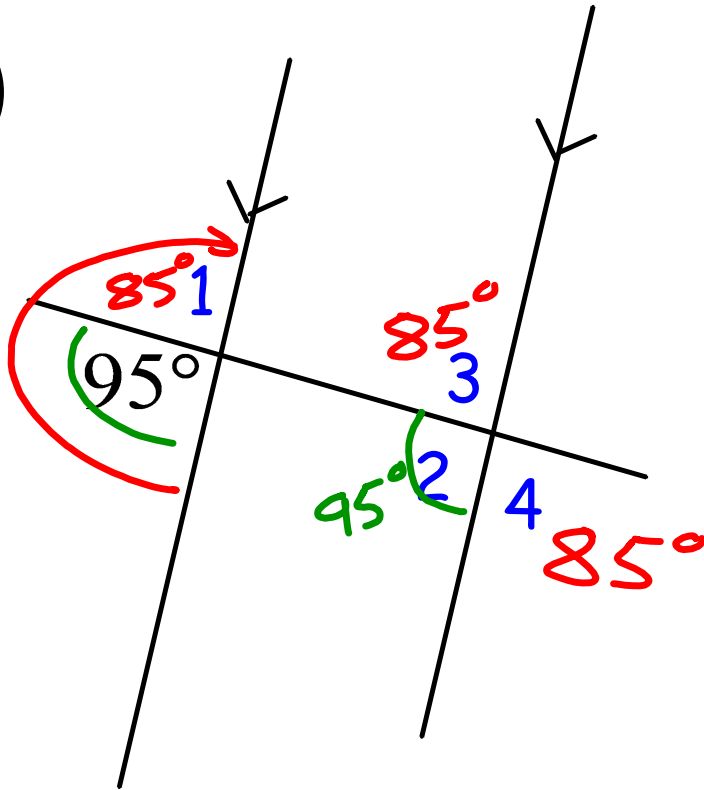
ex: 1 and 8, 2 and 7

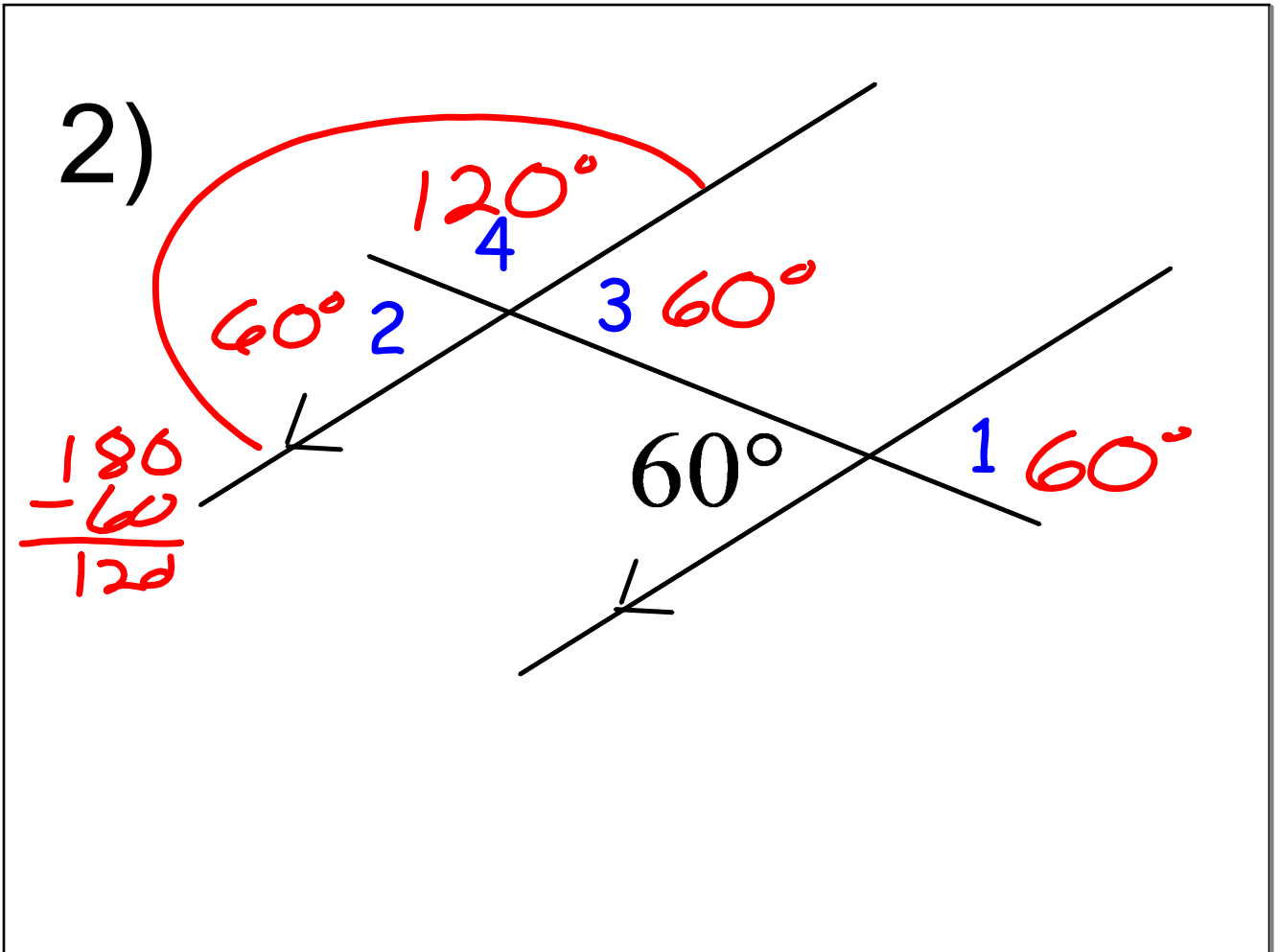


<p>1)</p>	<p>2)</p>
<p>3)</p>	<p>4) Solve for x.</p>

1)

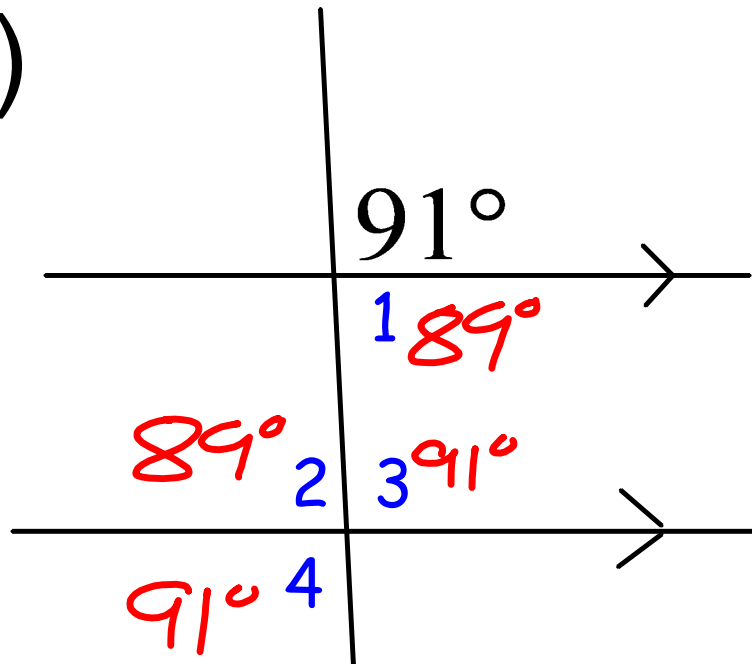
$$\begin{array}{r} 180 \\ - 95 \\ \hline 85 \end{array}$$





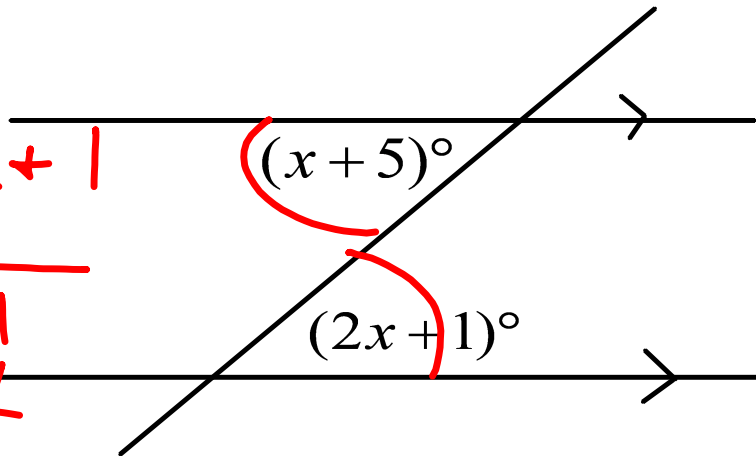
3)

$$\begin{array}{r} 180 \\ - 91 \\ \hline 89 \end{array}$$



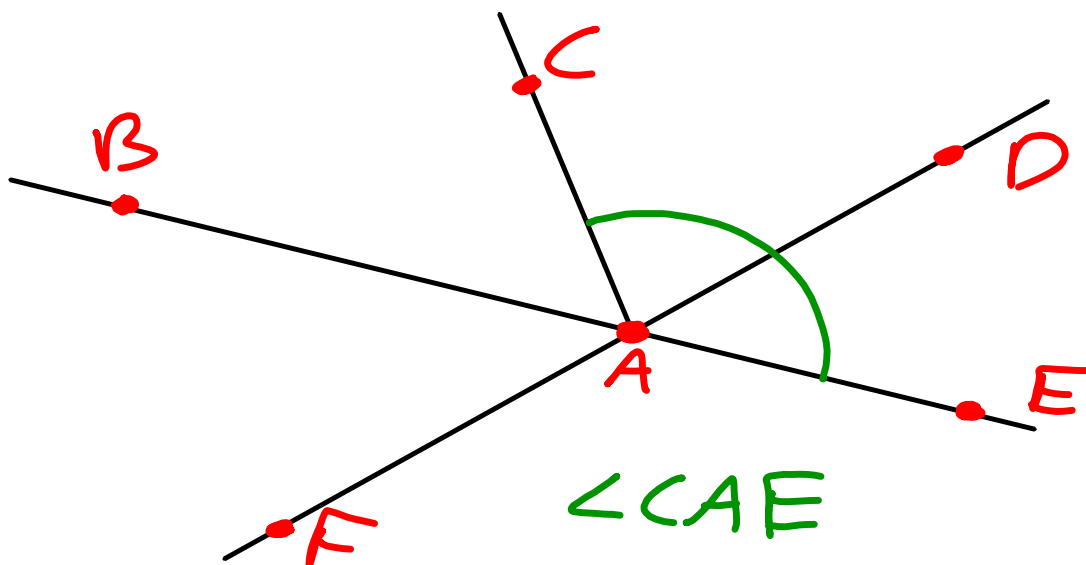
4) Solve for x.

$$\begin{array}{r} x+5=2x+1 \\ -x \quad -x \\ \hline 5=x+1 \\ -1 \quad -1 \\ \hline 4=x \end{array}$$





# Naming Angles





March 7, 2022

